

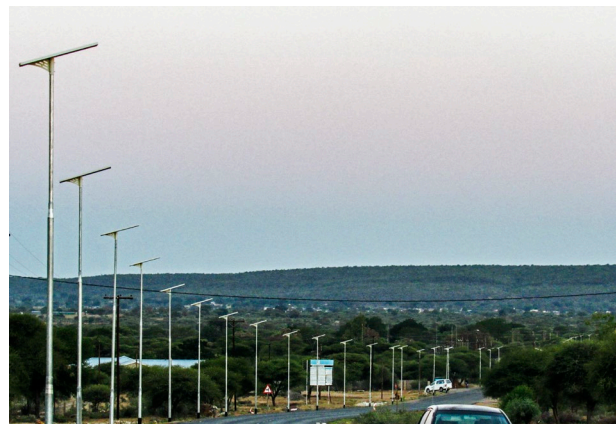
### FEATURES & ADVANTAGES

- ✓ **12,000 LM** max lamp lumen high brightness
- ✓ **100,000+ Hours** long LED lifespan, with professional heat dissipation design
- ✓ **25 Years** long product lifespan
- ✓ **3,000+ Cycles** life LiFePO4 batteries with inbuilt Micro-BMS technologies
- ✓ **99.9%** MPPT tracking efficiency
- ✓ **IP68** rated controller vs. IP66 rated electrical compartment
- ✓ **5+ Days** cloudy/rainy days autonomy
- ✓ **IES Type 1~5** with professional optical designs available to match different project requirements
- ✓ **Flexible & Customized Working Modes** with timer and motion sensor by programming
- ✓ **IoT Control** and online remote monitoring as optional via ZigBee or LoRaWAN



### APPLICATIONS

- ✓ Highway lighting
- ✓ Expressway lighting
- ✓ Street lighting
- ✓ Roadway lighting
- ✓ Public Areas lighting (squares, theme parks, park lots....)



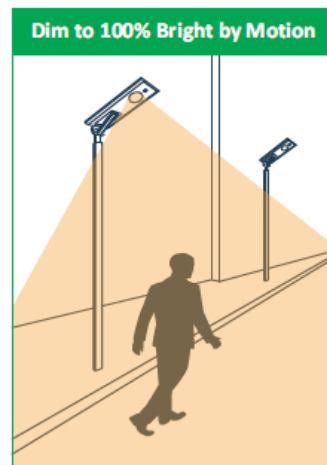
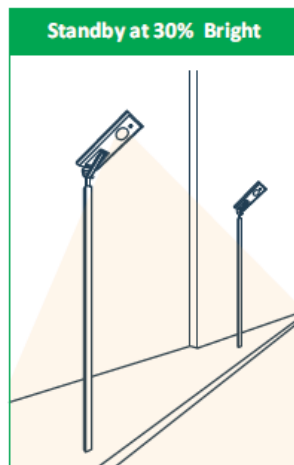
### TECHNICAL SPECIFICATIONS

LED Light Source	Rated Power	24V/ 120W (36LEDsx4 modules)
	LED Brand	PHILIPS 3030 (LED Lumen: 195lm/W)
	Lumens (LM)	10800-12000lm
	Life-span	100,000 hours
	Color Temp. (CCT)	5000K (2700~6500K Full range available)
	CRI	>70
	Viewing Angle	140° (Customized Angles & IES Types Available)
Solar Panel	Power	36V/120Wp (High Efficiency Mono PV)
	Life-span	25 years
Batteries	Capacity/Type	25.6V/30AH (768WH) / LiFePO4 Lithium
	Life-span	8+ years (3000 circles @60% DoD)
Controller	Type	MPPT / IP68/loT Online Monitoring as Optional
	Sensor	Microwave Radar (PIR & Timing as optional)
Full Charge Time	By Solar	6 hours (STC: 1000W/m <sup>2</sup> , 25°C)
Discharge Time	Dim Mode	>60 hours
	Bright Mode	>12 hours
Working Temp.	-30°C~+80°C	
Mounting Height/Brackets	10~12 m/ Post Top Brackets	
Space Between Lights	35~40m	
Materials	Aluminium Alloy	
Certificate	CE / ROHS / IP66/ IK08/ TÜV-SUD ISO9001/ ISO14001	
Warranty	3 years	

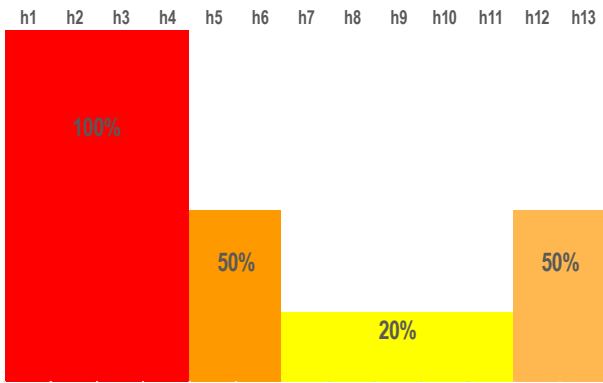
### PERFORMANCE

Power (%)	Lamp Lumens (lm)
100%	10,800
60%	6,480
50%	5,400
30%	3,240
20%	2,160

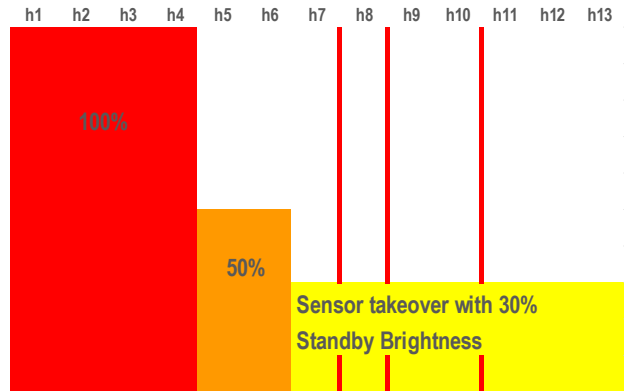
#### Dim with Radar Motion Sensor



### Dim with Timer



### Dim with Timer+ Motion Sensor



More customized control and working modes for maximum 5 sections available by programming upon customer and project requirements.

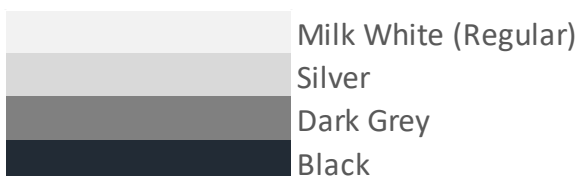
## DIMENSIONS

Items	L (mm)	W (mm)	H (mm)	N.W. (kgs)
Light Body	1350	520	55	17.4

## PACKING INFORMATION

Items	Package	L (mm)	W (mm)	H (mm)	CBM	G.W. (kgs)
Light Body	2pcs per Carton	1388	565	185	0.145	38.00
Mounting Brackets	4pcs per Carton	875	440	285	0.109	27.0
PCS/40'HQ Container:	500 pcs	PCS/20' Container		200 pcs		

## FINISHED COLOR



Customized Full Range Colors Available

## ACCESSORIES

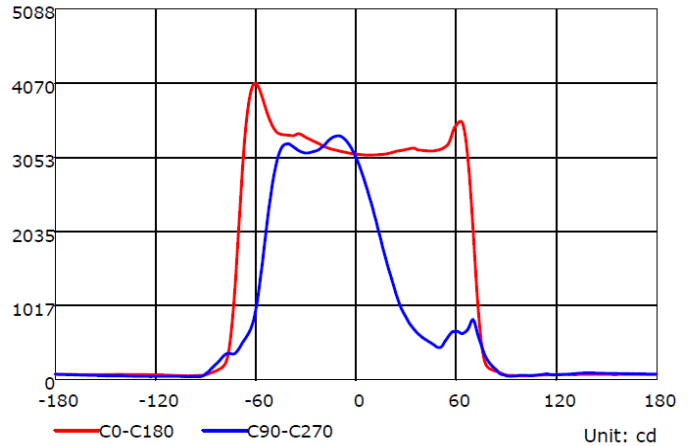
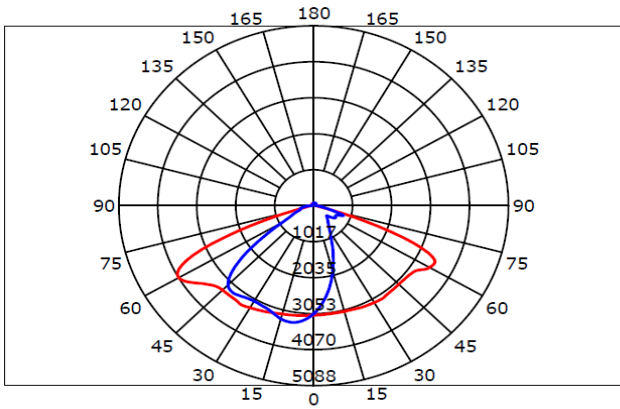
Tube Bracket for Pole Top Mounting  
With Customize Angles



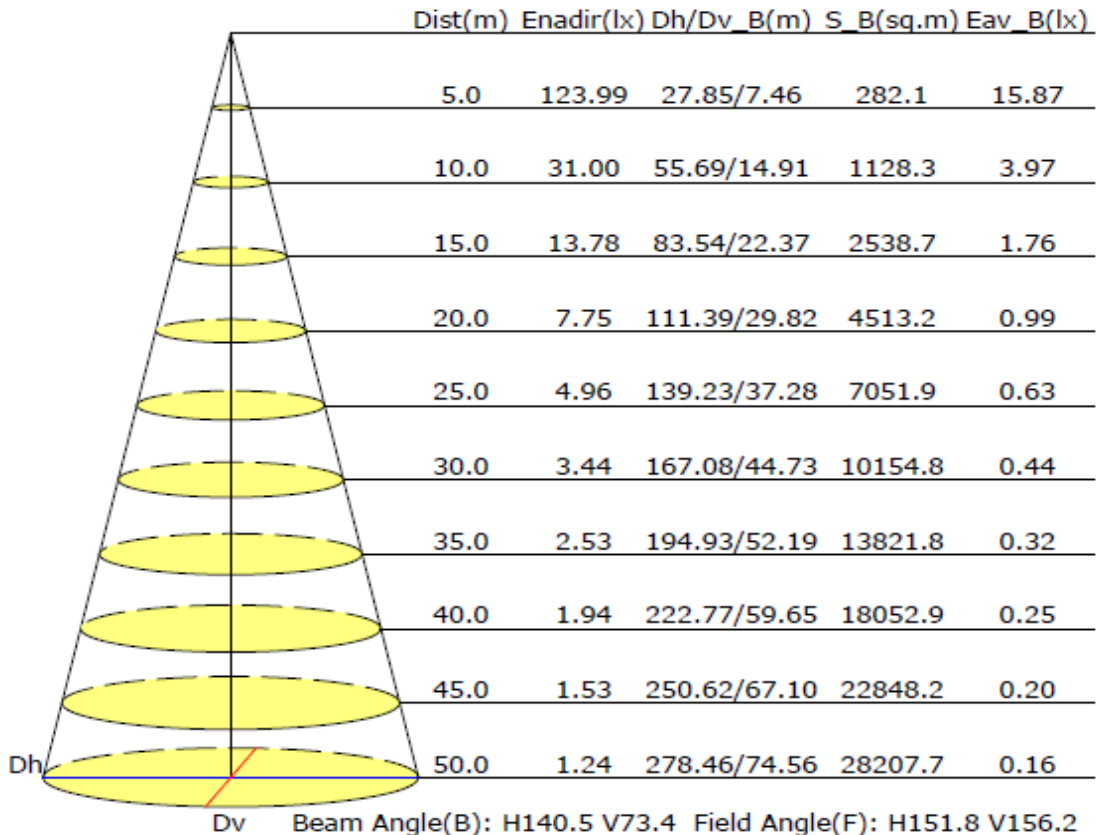
### DISTRIBUTIONS & IES TYPE

IES Type II as regular distribution, customized IES Types available upon requirements

#### Luminous Intensity Distribution Curve



#### Illuminance at a Distance





# LED SOLAR STREET LIGHT (ALL IN ONE)

Model No. ISSL-BRZ-120W

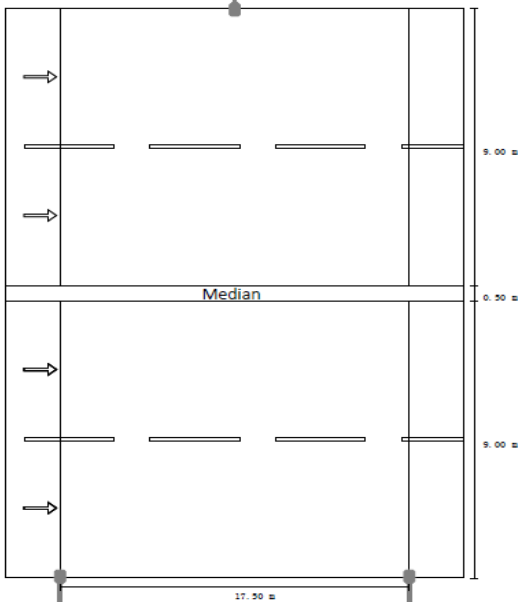
[www.esavior.cn](http://www.esavior.cn)

## DIALUX SIMULATION REPORT

Street Profile: ( Tarmac: R3, q0: 0.070)

Pole Height :10m ; Pole Distance :35m; Road Width: 18m; Lanes: 4;

### Luminaire Arrangements



### Valuation Field Roadway / Isolines (E)

